



FINE  
STEEL

# PRODUCTS & SERVICES CATALOGUE

EDITION 1



[FINESTEEL.COM.AU](http://FINESTEEL.COM.AU)

## ABOUT

# FINESTEEL

Finesteel is a new and growing reinforcement company that commenced its operations in 2014 in Sydney. From the beginning, our focus has been to build relationships with clients through consistent supply of the highest quality reinforcing products and professional services.

Our experienced team of staff includes sales, scheduling, production who are all dedicated to facilitating our clients' projects, the service level provided by our personnel assist our clients to meet their programs and requirements on time.

## PRODUCTS

Reinforcing mesh, reinforcing bar, off-site prefabricated cage and all accessories you need for your concrete pour.

## SERVICES

### ESTIMATING

By providing estimating services, we can work out the most cost effective way for your project.

### DELIVERY

We have a range of delivery options available for our customers.

### BAR PROCESSING

Reinforced bar-cutting to length, bent to shape, threading, bundling and prefabricated Cages.

### SCHEDULING

We can accurately schedule customers reinforcement needs as required on site.

### TAG PLAN/DOCUMENTS

The scheduling team take pride in finding ways to help you improve build speed and minimize waste.

### GALVANIZING

We supply galvanized reinforcing steel bar to Australian Standard AS4534.

## CONTENTS

### MESH

Rectangular Mesh	4
Square Mesh	4
Trench Mesh	5

### REINFORCING BAR

Deformed Bar	6
Round Bar	6

### REO ACCESSORIES

Wire Bar Chairs	7
Metal Base Plates	8
Plastic Ground Chairs	8
Plastic Clip-on Chairs	9
Plastic Circular Chairs	9
Plastic Mesh Chairs	10
Plastic Deck Chairs	10
Concrete Blocks (Aspros)	11
Plastic Safety Caps	11
Tie Wire	11

### CONCRETE ACCESSORIES

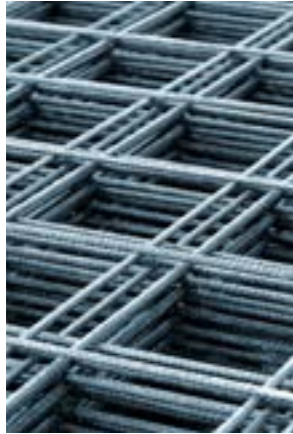
Polythene Building Film	12
Expansion Joint Form	12
Expansion Joint Form Stickyback	12
Key Joints	13
Bondek	13

### SERVICES

Estimating & Quoting	14
Scheduling	14
Tag Plan & Documents	14
Delivery	14
Prefabrication	14
Galvanizing	14

# MESH

## RIBBED SQUARE MESH



Code	Main Wires *	Edge Wires *	Cross Wires *	Mass (kg)
SL52	4.75 @ 200	4.75 @ 100	4.75 @ 200	21
SL62	6.00 @ 200	4.75 @ 100	6.00 @ 200	33
SL72	6.75 @ 200	4.75 @ 100	6.75 @ 200	41
SL81	7.60 @ 100	7.60 @ 100	7.60 @ 100	105
SL82	7.60 @ 200	6.00 @ 100	7.60 @ 200	52
SL92	8.55 @ 200	6.00 @ 100	8.55 @ 200	65
SL102	9.50 @ 200	6.75 @ 100	9.50 @ 200	80

\* Diameter (mm) @ Spacing (mm)

Ribbed square mesh in standard 6.0m x 2.4m sheets. Complies with AS/NZS 4671.

## RECTANGULAR MESH



Code	Main Wires (mm)	Cross Wires (mm)	Mass (kg)
RL718	6.75 @ 100	7.60 @ 200	68
RL818	7.60 @ 100	7.60 @ 200	79
RL918	8.55 @ 100	7.60 @ 200	93
RL1018	9.50 @ 100	7.60 @ 200	109
RL1118	10.65 @ 100	7.60 @ 200	131
RL1218	11.90 @ 100	7.60 @ 200	157

Rectangular mesh in standard 6.0m x 2.4m sheets. Complies with AS/NZS 4671.

### ESTIMATE TIP

To estimate the number of full size (6m x 2.4m) sheets of mesh required to cover a known area.

Divide the area in square metres (m<sup>2</sup>) by 12.4 and then round up to the next whole number. (based on standard laps of 2 outermost edge wires.)

For example: for an area of 200m<sup>2</sup>  
 $200 \div 12.4 = 17.74$   
 So you need 18 sheets of mesh.

# MESH

## TRENCH MESH



Code	Main Wires *	Cross Wires *	Width (m)	Length (m)	Mass (kg)
L08TM200	7.60 @ 100	4.00 @ 300	0.2	6.0	7
L08TM300	7.60 @ 100	4.00 @ 300	0.3	6.0	9
L08TM400	7.60 @ 100	4.00 @ 300	0.4	6.0	12
L11TM200	10.65 @ 100	4.75 @ 300	0.2	6.0	13
L11TM300	10.65 @ 100	4.75 @ 300	0.3	6.0	18
L11TM400	10.65 @ 100	4.75 @ 300	0.4	6.0	22
L11TM500	10.65 @ 100	4.75 @ 300	0.5	6.0	26
L12TM200	11.90 @ 100	4.75 @ 300	0.2	6.0	16
L12TM300	11.90 @ 100	4.75 @ 300	0.3	6.0	22
L12TM400	11.90 @ 100	4.75 @ 300	0.4	6.0	27

\* Diameter (mm) @ Spacing (mm)

Complies with AS/NZS 4671.

### ESTIMATE TIP

To estimate the number of trench mesh sheets required to fill a known length of area.

Divide the length of the beam in linear metres (m) by 5.4 then round up to the next whole number. Then multiply by the number of layers.

For example: for a 22m beam  
 $29 \div 5.4 = 5.37$   
 So you need 6 sheets of trench mesh per layer.

## REINFORCING BAR

### DEFORMED BAR



Code	Diameter (mm)	Grade Description	Stock Lengths (m)
N10	10	500 N Deformed Bar	6
N12	12	500 N Deformed Bar	6, 9, 12
N16	16	500 N Deformed Bar	6, 9, 12
N20	20	500 N Deformed Bar	6, 12
N24	24	500 N Deformed Bar	12
N28	28	500 N Deformed Bar	12
N32	32	500 N Deformed Bar	12
N36	36	500 N Deformed Bar	12

### ROUND BAR



Code	Diameter (mm)	Grade Description	Stock Lengths (m)
R10	10	250 R Plain Round Bar	6
R12	12	250 R Plain Round Bar	6
R16	16	250 R Plain Round Bar	6
R20	20	250 R Plain Round Bar	6
R24	24	250 R Plain Round Bar	6
R28	28	250 R Plain Round Bar	*
R33	32	250 R Plain Round Bar	*

\* Available by special order only, minimum quantity required.

#### Reinforcing Bar Complies with AS/NZS 4761

Fine Steel offers a complete supply service from receipt of your project's construction drawings through to supply to site of tailor made bar cut, bent, bundled and labelled with schedules and marking plan for placing. Processing (cutting, bending, bundling and tagging) of scheduled steel is performed using the latest industry equipment. The in-house computer system allocates production to the appropriate machine for each task to be performed. Each delivery of completed material is tagged, tracked and assembled in one location for delivery.

## REO ACCESSORIES

### WIRE BAR CHAIR



Code	Description	Std Pack
WTBC020	Reinforcement Spacers - 20mm	100
WTBC025	Reinforcement Spacers - 25mm	100
WTBC030	Reinforcement Spacers - 30mm	100
WTBC040	Reinforcement Spacers - 40mm	100
WTBC050	Reinforcement Spacers - 50mm	100
WTBC060	Reinforcement Spacers - 60mm	100
WTBC065	Reinforcement Spacers - 65mm	100
WTBC070	Reinforcement Spacers - 70mm	100
WTBC080	Reinforcement Spacers - 80mm	100
WTBC090	Reinforcement Spacers - 90mm	100
WTBC100	Reinforcement Spacers - 100mm	100
WTBC110	Reinforcement Spacers - 110mm	50
WTBC120	Reinforcement Spacers - 120mm	50
WTBC130	Reinforcement Spacers - 130mm	50
WTBC140	Reinforcement Spacers - 140mm	50
WTBC150	Reinforcement Spacers - 150mm	50
WTBC160	Reinforcement Spacers - 160mm	50
WTBC170	Reinforcement Spacers - 170mm	50
WTBC180	Reinforcement Spacers - 180mm	50
WTBC190	Reinforcement Spacers - 190mm	50
WTBC200	Reinforcement Spacers - 200mm	50
WTBC210	Reinforcement Spacers - 210mm	50
WTBC220	Reinforcement Spacers - 220mm	50
WTBC230	Reinforcement Spacers - 230mm	50
WTBC240	Reinforcement Spacers - 240mm	50
WTBC250	Reinforcement Spacers - 250mm	50
WTBC260	Reinforcement Spacers - 260mm	50
WTBC270	Reinforcement Spacers - 270mm	50
WTBC280	Reinforcement Spacers - 280mm	25

## REO ACCESSORIES

### WIRE BAR CHAIR



Code	Description	Std Pack
WTBC290	Reinforcement Spacers - 290mm	25
WTBC300	Reinforcement Spacers - 300mm	25
WTBC320	Reinforcement Spacers - 320mm	25
WTBC340	Reinforcement Spacers - 340mm	25
WTBC360	Reinforcement Spacers - 360mm	25
WTBC380	Reinforcement Spacers - 380mm	25
WTBC400	Reinforcement Spacers - 400mm	25

### METAL BASE PLATE



Code	Size (mm)	Chair Height (mm)*	Std Pack
MBPS	154 diam	20-140	100
MBPL	224 diam	150-400	50

\*Metal Base Plates are round metal plates used to provide support for wire bar chairs on soft surfaces which may cause the wire spacer to sink into the ground.

Base plates 154mm to suit wire bar chairs height up to 140mm and Base plates 224mm to suit wire bar chairs height 150-400mm.

### PLASTIC GROUND CHAIR



Code	Description	Std Pack
PGC025/040	Plastic slab on ground spacers 25/40mm	100
PGC050/065	Plastic slab on ground spacers 50/65mm	100
PGC075/090	Plastic slab on ground spacers 75/90mm	100
PGC085/100	Plastic slab on ground spacers 85/100mm	100
PGC105/110	Plastic slab on ground spacers 105/110mm	100
PGC115/120	Plastic slab on ground spacers 115/120mm	100
PGC125/130	Plastic slab on ground spacers 125/130mm	100
PGC130/140	Plastic slab on ground spacers 130/140mm	100
PGC145/150	Plastic slab on ground spacers 145/150mm	100

For more details, please visit our website  
FINESTEEL.COM.AU

## REO ACCESSORIES

### PLASTIC CLIP-ON CHAIRS



Code	Description	Std Pack
PCOC020	Clip-on Bar Chair 20mm to suit 10-16mm Bar	100
PCOC025	Clip-on Bar Chair 25mm to suit 10-16mm Bar	100
PCOC030	Clip-on Bar Chair 30mm to suit 10-16mm Bar	100
PCOC040	Clip-on Bar Chair 40mm to suit 10-16mm Bar	100
PCOC050	Clip-on Bar Chair 50mm to suit 10-16mm Bar	100
PCOC065	Clip-on Bar Chair 65mm to suit 10-16mm Bar	100
PCOC075	Clip-on Bar Chair 75mm to suit 10-16mm Bar	100

### PLASTIC CIRCULAR CHAIRS



Code	Description	Std Pack
PCC020	Circular Chair 20mm to suit 10-12mm Bar	100
PCC025	Circular Chair 25mm to suit 10-12mm Bar	100
PCC030	Circular Chair 30mm to suit 10-12mm Bar	100
PCC040	Circular Chair 40mm to suit 10-12mm Bar	100
PCC050	Circular Chair 50mm to suit 10-12mm Bar	100
PCC065	Circular Chair 65mm to suit 10-12mm Bar	100
PCC075	Circular Chair 75mm to suit 10-12mm Bar	100
PCC030A	Circular Chair 30mm to suit 16-20mm Bar	100
PCC040A	Circular Chair 40mm to suit 16-20mm Bar	100
PCC050A	Circular Chair 50mm to suit 16-20mm Bar	100
PCC075A	Circular Chair 75mm to suit 16-20mm Bar	100

## REO ACCESSORIES

### PLASTIC MESH CHAIRS



Code	Description	Std Pack
PMC020	Clip-on Mesh Spacer 20mm	100
PMC025	Clip-on Mesh Spacer 25mm	100
PMC030	Clip-on Mesh Spacer 30mm	100
PMC040	Clip-on Mesh Spacer 40mm	100
PMC050	Clip-on Mesh Spacer 50mm	100
PMC060	Clip-on Mesh Spacer 60mm	100
PMC075	Clip-on Mesh Spacer 75mm	100

### PLASTIC DECK CHAIRS



Code	Description	Std Pack
PDC020/025	Plastic Deck Chair 20/25mm	100
PDC025/030	Plastic Deck Chair 25/30mm	100
PDC030/40	Plastic Deck Chair 30/40mm	100
PDC040/50	Plastic Deck Chair 40/50mm	100
PDC065/075	Plastic Deck Chair 65/75mm	100
PDC090/100	Plastic Deck Chair 90/100mm	100
PDC110/120	Plastic Deck Chair 110/120mm	100
PDC130/140	Plastic Deck Chair 130/140mm	100
PDC150/160	Plastic Deck Chair 150/160mm	100
PDC170/180	Plastic Deck Chair 170/180mm	100
PDC190/200	Plastic Deck Chair 190/200mm	100

## REO ACCESSORIES

### CONCRETE BLOCKS (ASPROS)



Code	Description	Std Pack
CB40	Concrete Block Spacer 40mm	75
CB50	Concrete Block Spacer 50mm	75
CB65	Concrete Block Spacer 65mm	25
CB75	Concrete Block Spacer 75mm	25
CB40/50/60	Concrete Block Spacer 40/50/60mm	25

### SAFETY CAPS



Code	Description	Std Pack
PSC12/36	Plastic Safety Caps to suit 12-36mm Bar	100
PSC16/20	Plastic Safety Caps to suit 12-20mm Bar	100

### TIE WIRE



Code	Description	Std Pack
BTW	Black Tie Wire 1.55mm x 95m	10
GTW	Galvanized Tie Wire 1.55mm x 95m	10, 16

## CONCRETE ACCESSORIES

### POLYTHENE BUILDING FILM



Code	Description	Std Pack
PB24H	Builder Plastic Black Hi Impact (4mx50mx200um)	1
PB24HO	Builder Plastic Orange Hi Impact (4mx50mx200um)	1
PB24HN	Builder Plastic Natural Hi Impact (4mx50mx200um)	1
PTR	Duct Tape 48mm x 30m	1

### EXPANSION JOINT FOAM



Code	Description	Std Pack
EJF1050	50mm x 10mm x 25m	1 roll
EJF1075	75mm x 10mm x 25m	1 roll
EJF10100	100mm x 10mm x 25m	1 roll
EJF10125	125mm x 10mm x 25m	1 roll
EJF10150	150mm x 10mm x 25m	1 roll
EJF10200	200mm x 10mm x 25m	1 roll
EJF10250	250mm x 10mm x 25m	1 roll
EJF10300	300mm x 10mm x 25m	1 roll

### EXPANSION JOINT FOAM STICKBACK



Code	Description	Std Pack
EJF1050S	50mm x 10mm x 25m	1 roll
EJF1075S	75mm x 10mm x 25m	1 roll
EJF10100S	100mm x 10mm x 25m	1 roll
EJF10125S	125mm x 10mm x 25m	1 roll
EJF10150S	150mm x 10mm x 25m	1 roll
EJF10200S	200mm x 10mm x 25m	1 roll
EJF10250S	250mm x 10mm x 25m	1 roll
EJF10300S	300mm x 10mm x 25m	1 roll

## CONCRETE ACCESSORIES

### KEY JOINT

Code	Description	Std Pack
KJD3100	3m lengths to suit slab thickness 100mm	1
KJD3125	3m lengths to suit slab thickness 125mm	1
KJD3150	3m lengths to suit slab thickness 150mm	1
KJD6100	6m lengths to suit slab thickness 100mm	1
KJD6125	6m lengths to suit slab thickness 125mm	1
KFD6150	6m lengths to suit slab thickness 150mm	1

### Bondek

Code	Description	Mass kg/m <sup>2</sup>
BD60	Galvanised Bondek 0.60mm x 600mm cover	8.38
BD75	Galvanised Bondek 0.75mm x 600mm cover	10.33
BD100	Galvanised Bondek 1.00mm x 600mm cover	13.56

\* Maximum Length: 6000mm & Minimum Length: 1000mm

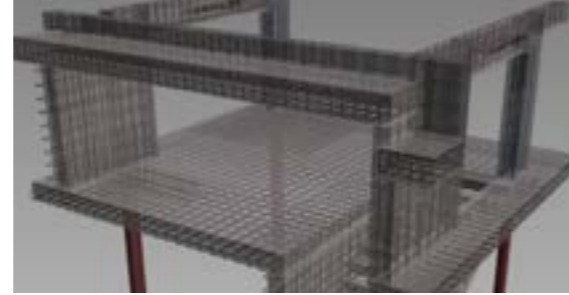
# SERVICES



## ESTIMATING & QUOTATIONS

Finesteel provides an estimating service for projects of any size varying from house slabs to unit and commercial developments.

Quantities of product can be estimated based on your engineer's drawings and specifications.



## SCHEDULING

Finesteel's professional schedulers have engineering backgrounds and are skilled in identifying manufacturing methods, and we can put your drawing details into the modeling software to ensure that all material fits together. That can accurately schedule customers reinforcement needs as required on site.



## TAG PLAN & DOCUMENTS

We prepare accurate detailed material lists and tag plans to assist with placing and fixing of reinforcement on site. Our scheduling team are committed to help you improve build speed and minimize waste.



## PREFABRICATION CAGE

Finesteel can supply prefabricated reinforcement cages aimed at helping customers raise productivity on their projects. Prefabrication of footings, beams & columns are all available.



## DELIVERY

We have a range of delivery options available to our customers. Our fleet consists of semi trailers and a variety of rigid body tray trucks. Many of our semi trailers and rigid body tray trucks have fixed cranes on their body to assist with the unloading of materials at your site.



## GALVANIZING

Finesteel uses Galvanizers that adhere to the relevant Australian Standards to ensure that you receive quality products.





**FINE  
STEEL**

63-69 Malta St,  
Fairfield East 2165 NSW

**P** [612] 9754 1621

**E** [sydney@finesteeel.com.au](mailto:sydney@finesteeel.com.au)

For more details, please visit our website  
**[FINESTEEL.COM.AU](http://FINESTEEL.COM.AU)**

**Scan your SmartPhone to visit us online**



All reinforcing products are supplied to the current Australian standards AS4671, AS3600.